

# THE LONDON RESORT

## The London Resort Development Consent Order

BC080001

### Environmental Statement Volume 3: Figures

#### Figure 9.3 – Sensitive Receptors

Document reference: 6.3.9.3

Revision: 00

December 2020

Planning Act 2008

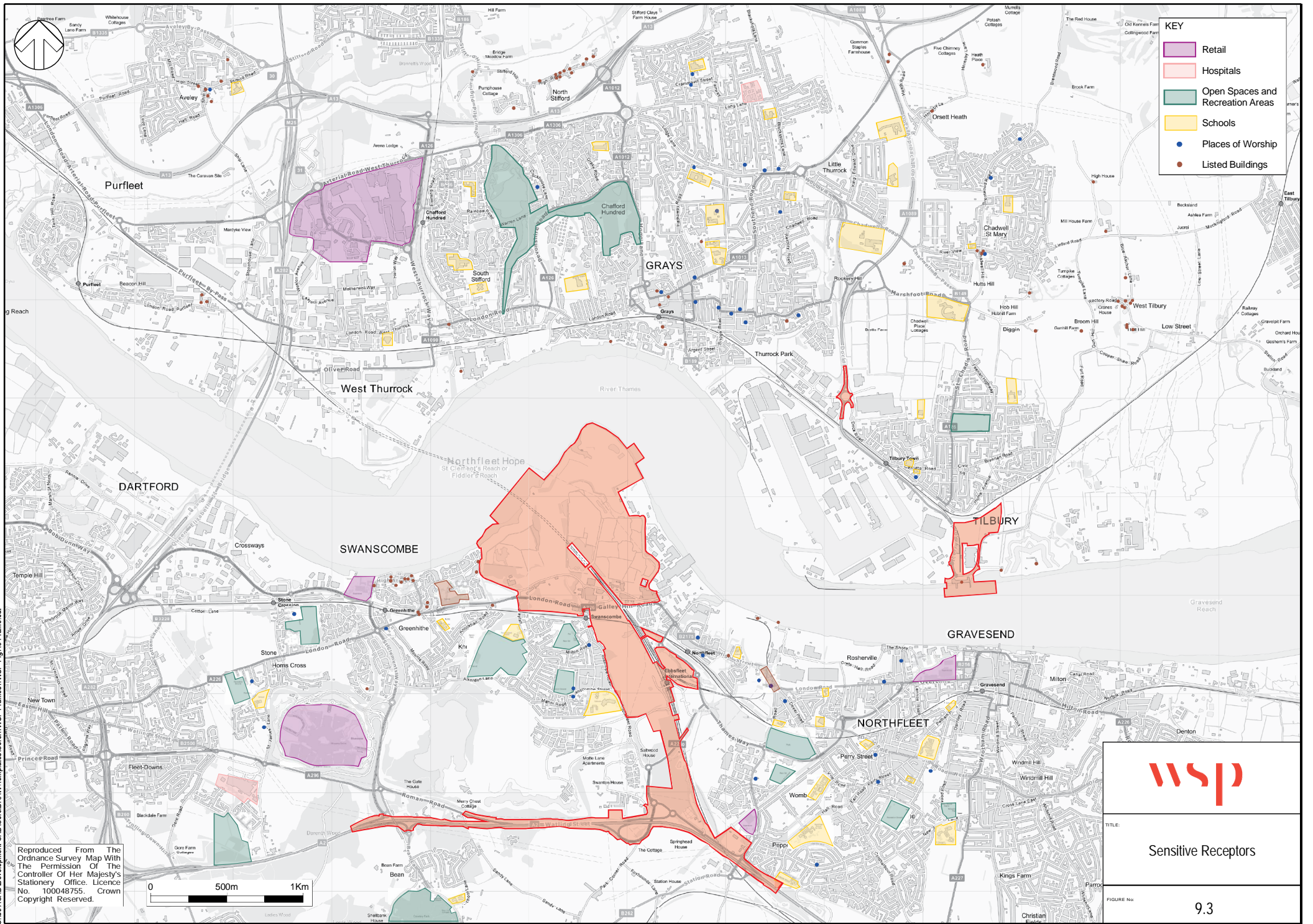
The Infrastructure Planning (Applications: Prescribed Forms and Procedure) Regulations 2009

Regulation 5(2)(a)

The Infrastructure Planning (Environmental Impact Assessment) Regulations 2017

Regulation 12(1)

[This page is intentionally left blank]



KEY	
<span style="display:inline-block; width:15px; height:15px; background-color:purple; border:1px solid black;"></span>	Retail
<span style="display:inline-block; width:15px; height:15px; background-color:lightcoral; border:1px solid black;"></span>	Hospitals
<span style="display:inline-block; width:15px; height:15px; background-color:lightgreen; border:1px solid black;"></span>	Open Spaces and Recreation Areas
<span style="display:inline-block; width:15px; height:15px; background-color:yellow; border:1px solid black;"></span>	Schools
<span style="display:inline-block; width:10px; height:10px; background-color:blue; border-radius:50%; border:1px solid black;"></span>	Places of Worship
<span style="display:inline-block; width:10px; height:10px; background-color:red; border-radius:50%; border:1px solid black;"></span>	Listed Buildings



Sensitive Receptors

TITLE:  
FIGURE No:

O:\6 ACAD\Development CAD\Drawings\WSP Frames\WSP-Fig 9.3 Frame.cdf

Reproduced From The Ordnance Survey Map With The Permission Of The Controller Of Her Majesty's Stationery Office. Licence No. 100048755. Crown Copyright Reserved.

